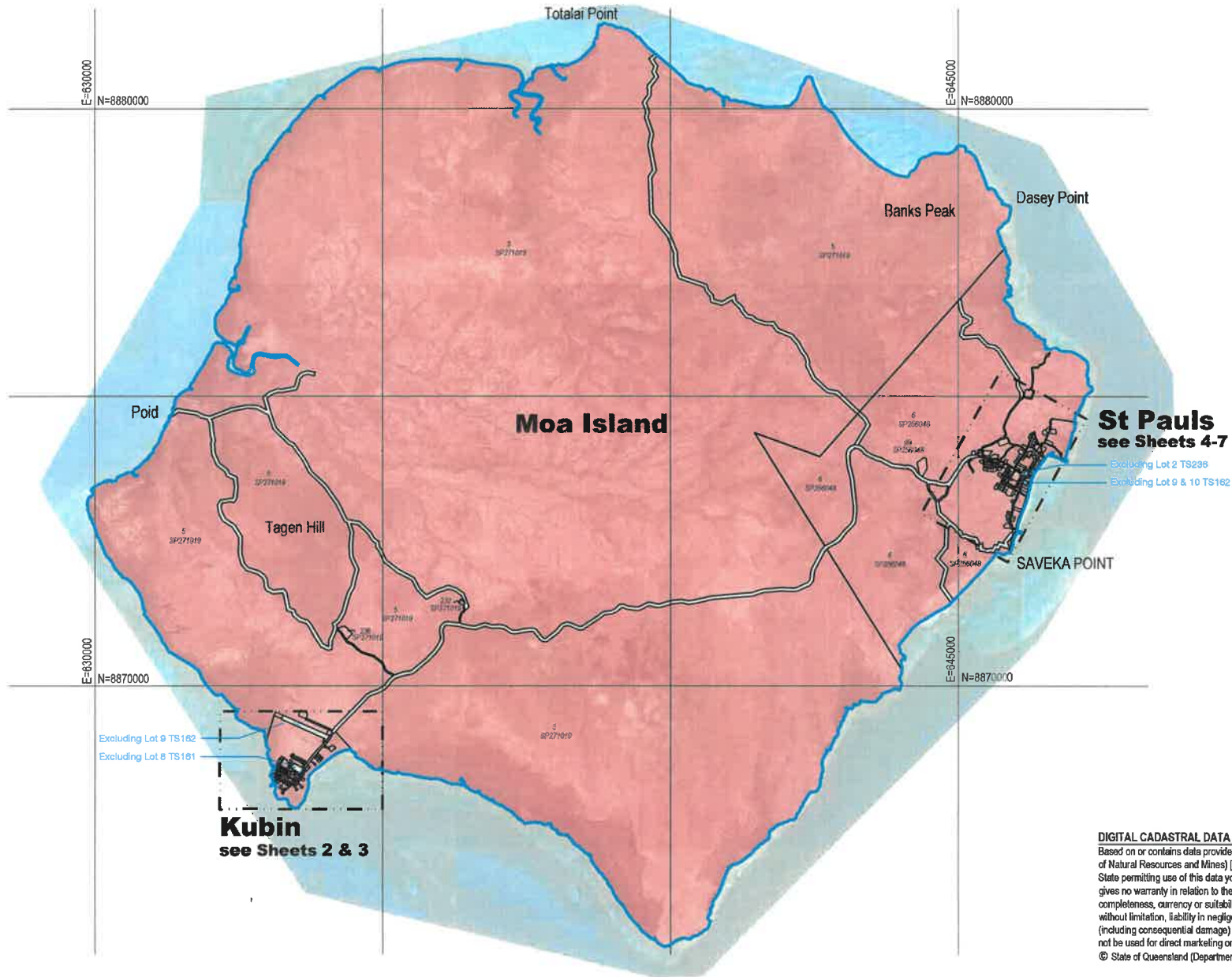


**Schedules**

**Schedule 3 – Map of ILUA Area**

The map in this schedule depicts the *ILUA Area*.



**DIGITAL CADASTRAL DATA BASE - BOUNDARY INFORMATION.**  
 Based on or contains data provided by the State of Queensland (Department of Natural Resources and Mines) (9 January 2019). In consideration of the State permitting use of this data you acknowledge and agree that the State gives no warranty in relation to the data (including accuracy, reliability, completeness, currency or suitability) and accepts no liability (including without limitation, liability in negligence) for any loss, damage or costs (including consequential damage) relating to any use of the data. Data must not be used for direct marketing or be used in breach of the privacy laws.  
 © State of Queensland (Department of Natural Resource & Mines) (2019)



**Schedule 3 - Moa Infrastructure and Housing ILUA**



**LEGEND**

- ILUA Area
- Native Title Determination

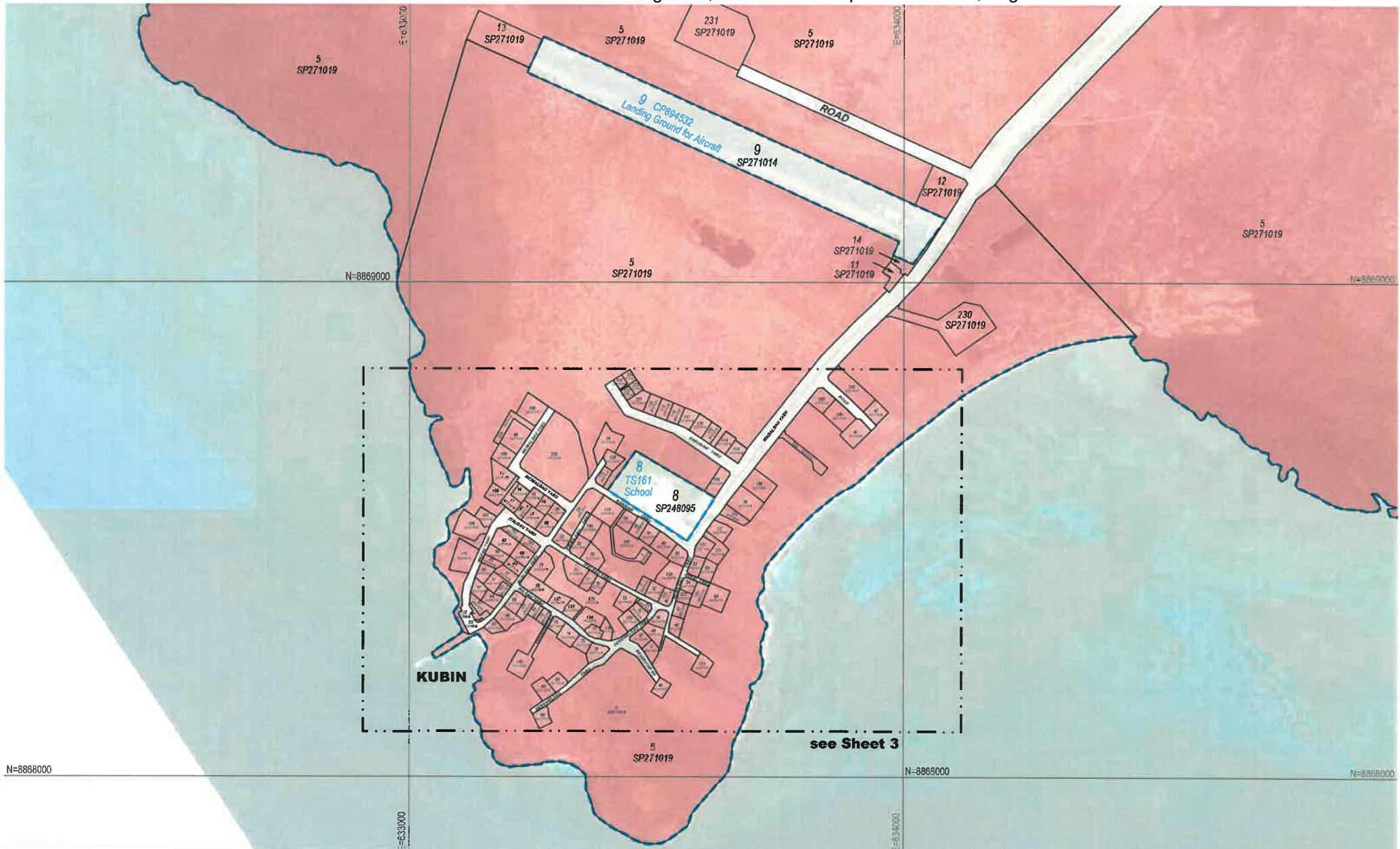
6 SP256048 Lotno PlanNumber DCDB 9 January 2019



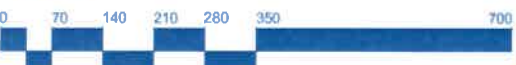
RPS Australia East Pty Ltd  
 ACN 140 292 782

135 Abbott St  
 PO Box 1949  
 CAIRNS QLD 4870

T +61 7 4031 1336 F +61 7 4031 2942 W rpsgroup.com.au



**Schedule 3 - Moa Infrastructure and Housing ILUA**  
**Kubin**



**LEGEND**

- ILUA Area
- Native Title Determination

6 SP256048 Lotno PlanNumber DCDB 9 January 2019

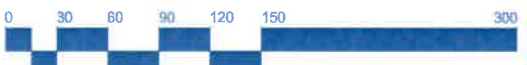


RPS Australia East Pty Ltd  
ACN 140 292 762  
135 Abbott St  
PO Box 1949  
CAIRNS QLD 4870

T +61 7 4031 1336 F +61 7 4031 2942 W rpsgroup.com.au



**Schedule 3 - Moa Infrastructure and Housing ILUA**  
**Kubin**



**LEGEND**

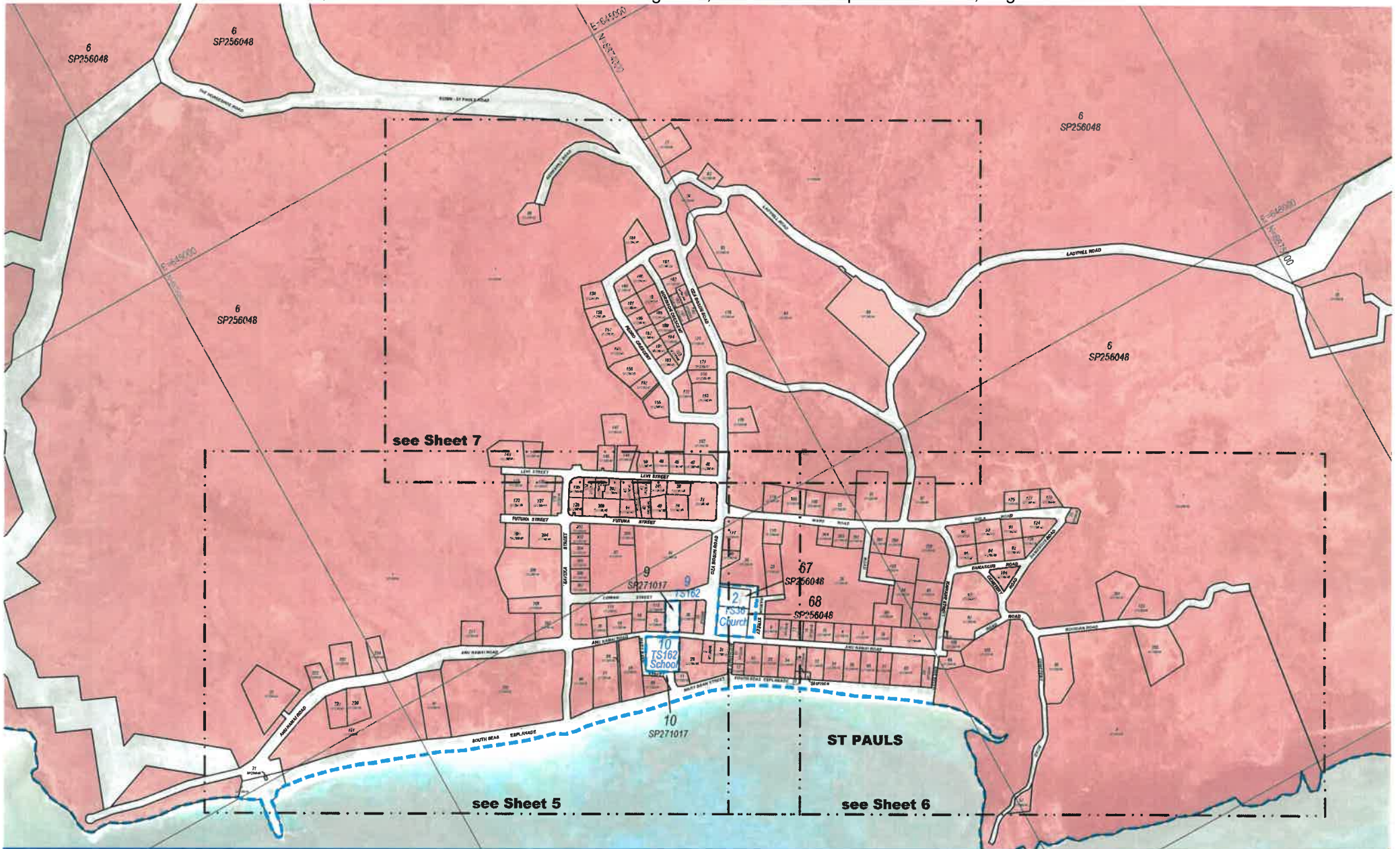
- ILUA Area
- Native Title Determination

6 SP256048 Lotno PlanNumber DCDB 9 January 2019



RPS Australia East Pty Ltd  
ACN 140 292 762  
135 Abbott St  
PO Box 1949  
CAIRNS QLD 4870

T +61 7 4031 1336 F +61 7 4031 2942 W rpsgroup.com.au



**Schedule 3 - Moa Infrastructure and Housing ILUA**  
**St Pauls**



**LEGEND**

- ILUA Area
- Native Title Determination

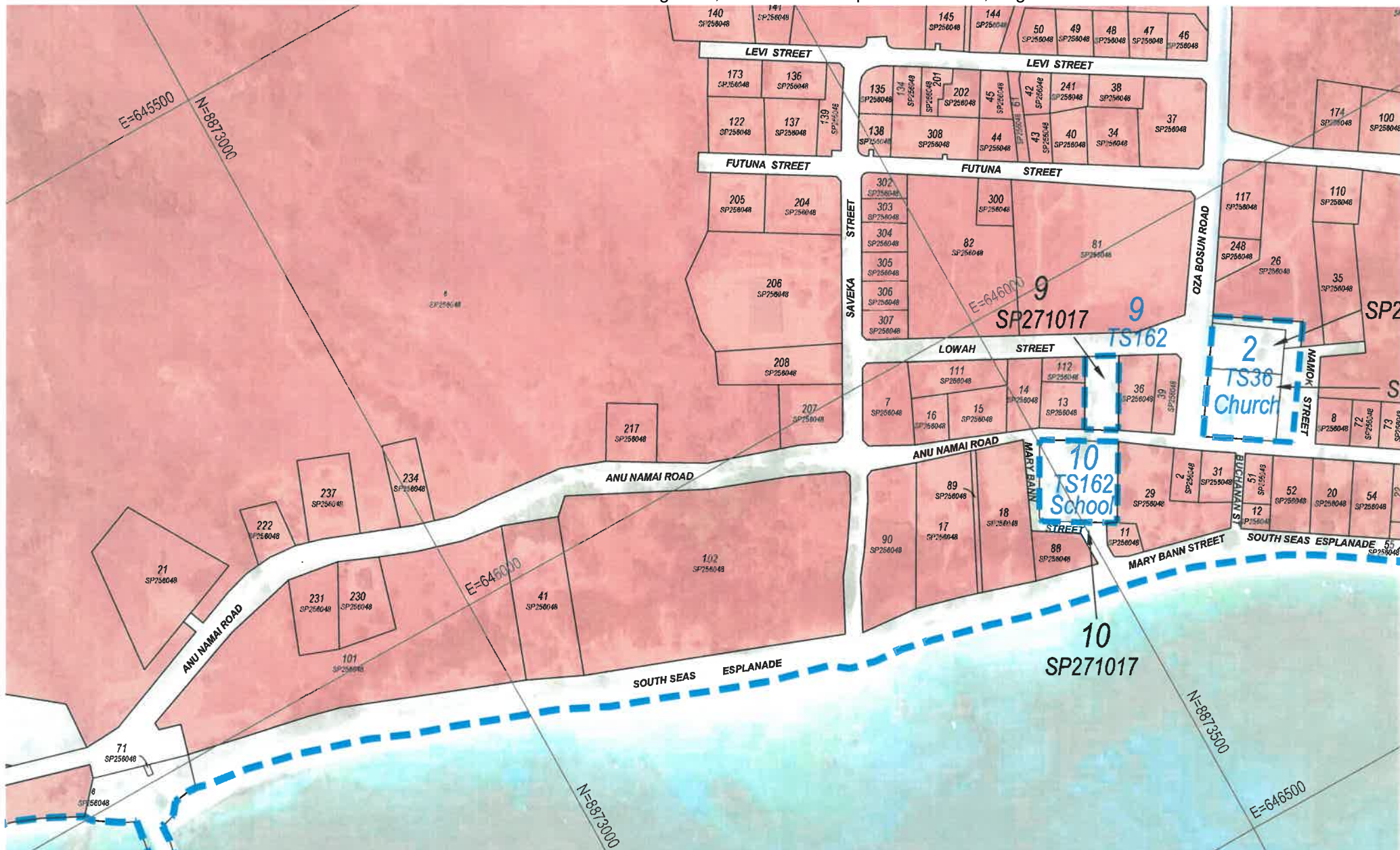
6 SP256048 Lotno PlanNumber DCDB 9 January 2019



RPS Australia East Pty Ltd  
 ACN 140 292 762

135 Abbott St  
 PO Box 1949  
 CAIRNS QLD 4870

T +61 7 4031 1336 F +61 7 4031 2942 W rpsgroup.com.au



**Schedule 3 - Moa Infrastructure and Housing ILUA**  
**St Pauls**



**LEGEND**

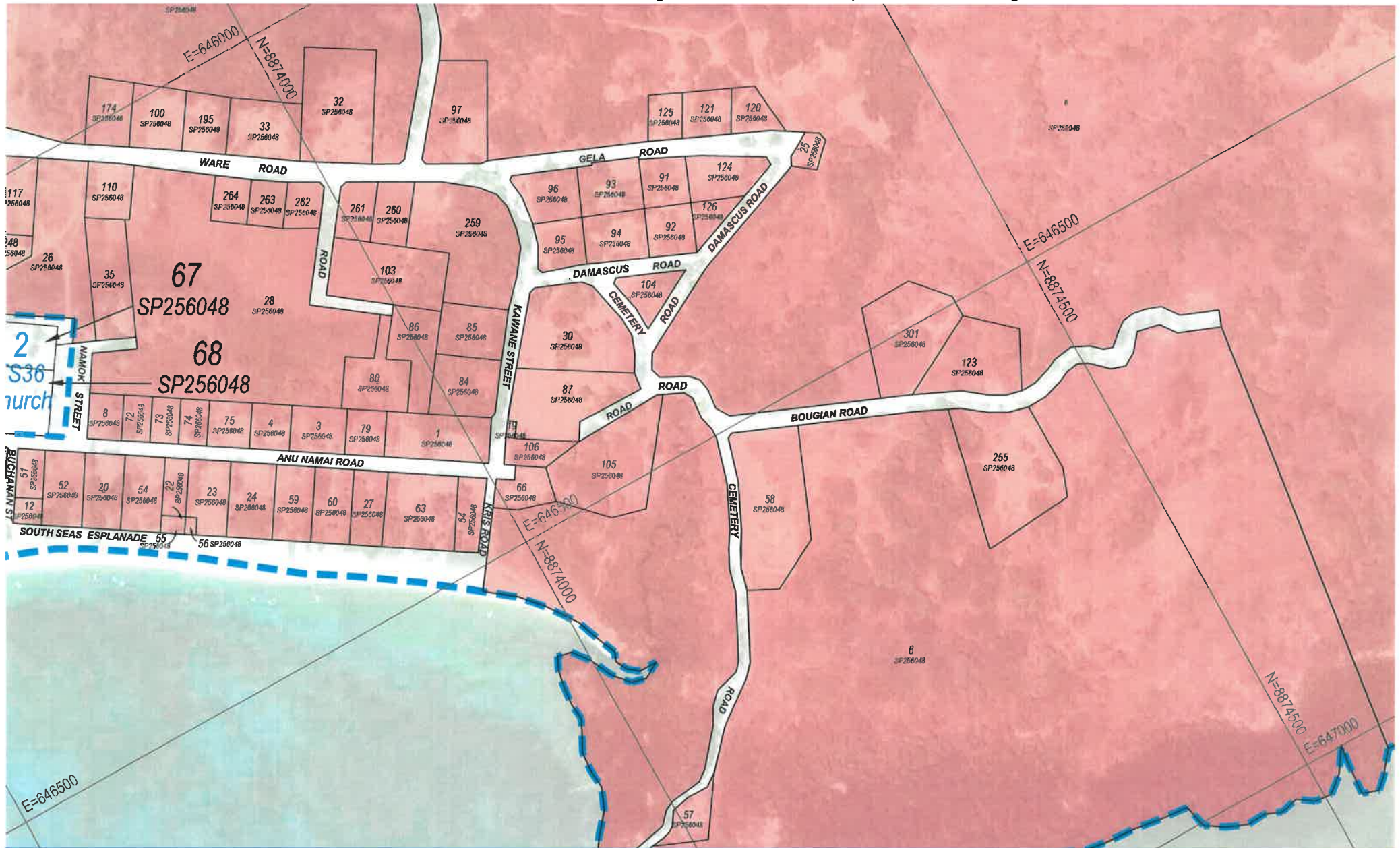
- ILUA Area
- Native Title Determination

6 SP256048 Lotno PlanNumber DCDB 9 January 2019



RPS Australia East Pty Ltd  
 ACN 140 292 762  
 135 Abbott St  
 PO Box 1949  
 CAIRNS QLD 4870

T +61 7 4031 1336 F +61 7 4031 2942 W rpsgroup.com.au



**Schedule 3 - Moa Infrastructure and Housing ILUA**  
**St Pauls**



**LEGEND**

- ILUA Area
- Native Title Determination

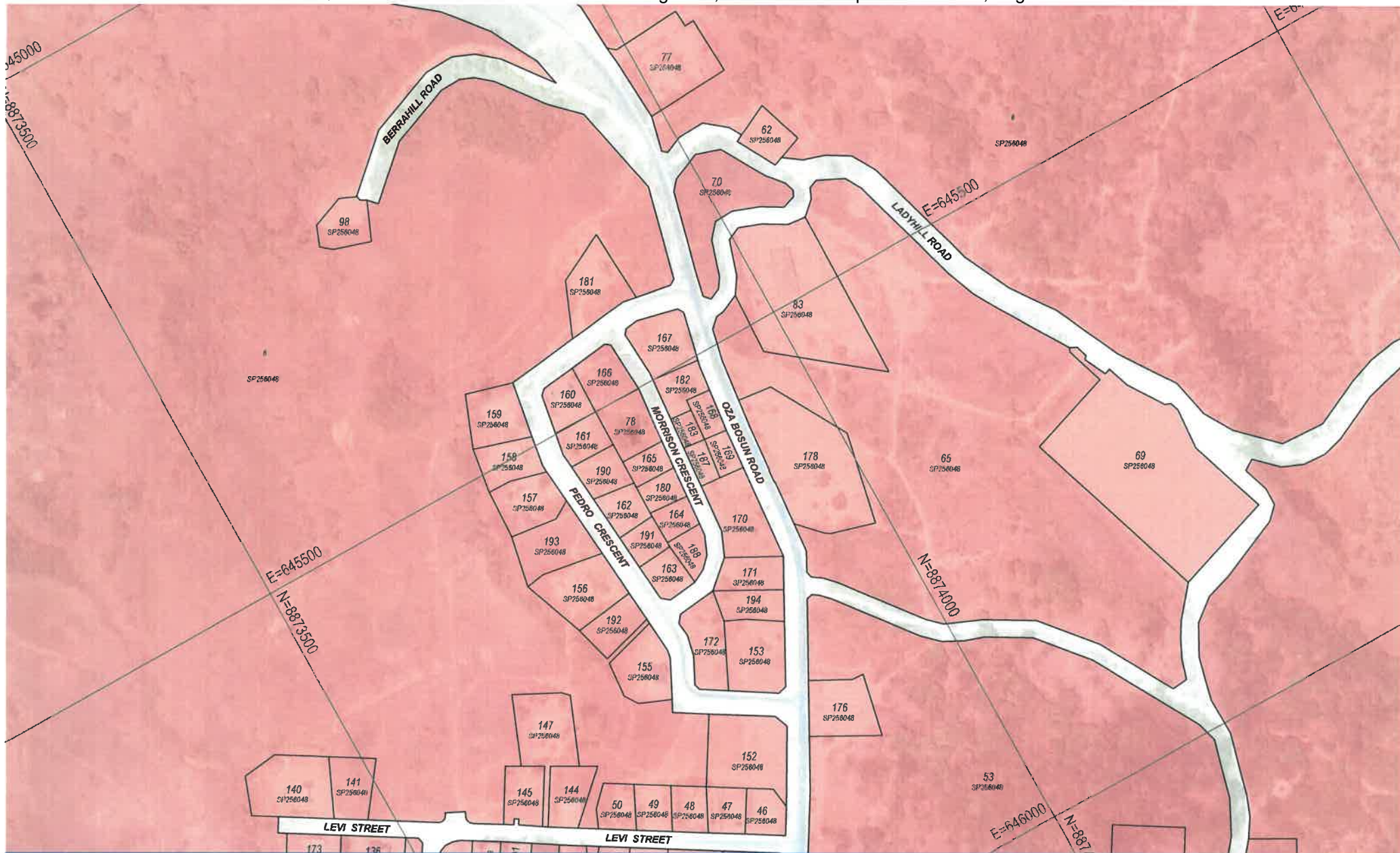
6 SP256048 Lotno PlanNumber DCDB 9 January 2019



RPS Australia East Pty Ltd  
 ACN 140 292 762

135 Abbott St  
 PO Box 1949  
 CAIRNS QLD 4870

T +61 7 4031 1336 F +61 7 4031 2942 W rpigroup.com.au



**Schedule 3 - Moa Infrastructure and Housing ILUA**  
**St Pauls**



**LEGEND**

- ILUA Area
- Native Title Determination

6 SP256048 Lotno PlanNumber DCDB 9 January 2019



RPS Australia East Pty Ltd  
 ACN 140 292 762  
 135 Abbott St  
 PO Box 1949  
 CAIRNS QLD 4870

T +61 7 4031 1336 F +61 7 4031 2942 W rpsgroup.com.au